



The Global Gateway Enabling European Strategic Autonomy in Maritime Transport

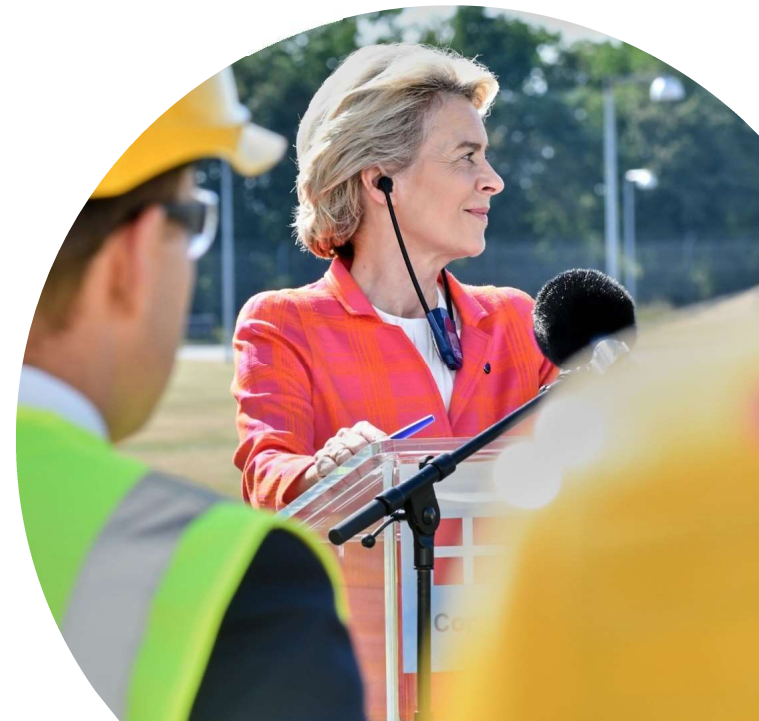
Dr Sergio OLIVETE JOSA

European Commission - DG International Partnerships



“The Global Gateway Strategy is a template for how Europe can build more resilient connections with the world.”

Ursula von der Leyen,
President of the European Commission

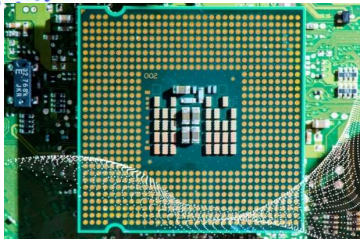
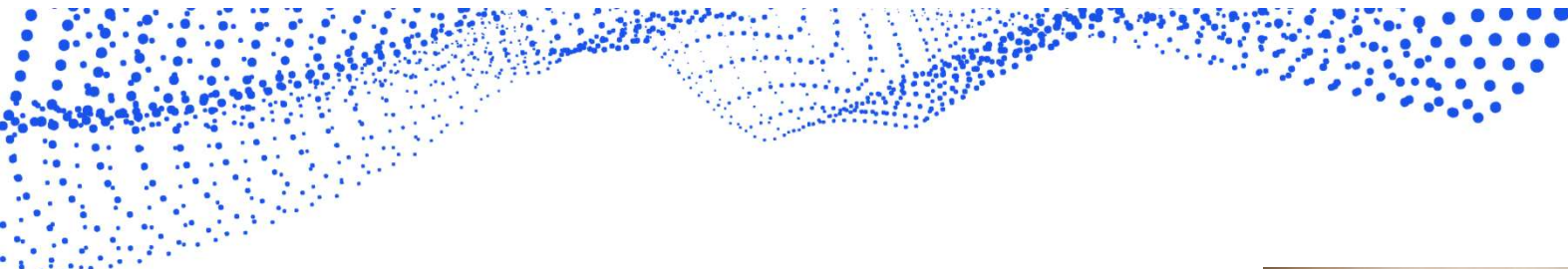




Global Gateway – what is it ?

- Our **principles** and **value-based offer** to partner countries: to tackle the infrastructure investment deficit and support the green & digital transition globally
- Reflects a change in the way the EU approaches its external action: combining the **needs of partner countries (SDGs, Paris Agreement ,...)** with a stronger assessment of the **EU's strategic interests** to position the EU more prominently in a competitive world
- **Team Europe:** Whole-of-government approach: EC, EIB, EBRD; all relevant ministries, development agencies, development finance institutions, export credit agencies, private sector





Digital

The EU will support open and secure internet



Health

The EU will help strengthen supply chains and local vaccines production



Climate and energy

The EU will support investments and rules paving the way to the clean energy transition



Education and research

The EU will invest in high quality education, with a focus on girls and women and vulnerable groups



Transport

The EU will support all modes of green, smart and safe transport



Democratic values and high standards



Good governance and transparency



Equal partnerships



Green and clean



Security focused



Catalysing private sector investment

Transport as an investment priority

- Focus on physical infrastructure to strengthen digital, transport and energy networks
- Provide an enabling environment to make sure projects deliver, by offering attractive investment and business-friendly trading conditions





EU contribution to the GG transport priority

- **Benin** – Port of Cotonou upgrades to address environmental challenges
- **Congo** – Extension and upgrading of the infrastructures of the autonomous Port of Pointe-Noire
- **Papua New Guinea** – Rehabilitation of the Port of Rabaul
- **Caribbean Community** - A multi-modal ferry connecting Guyana and Suriname to Trinidad and Tobago, Barbados, the OECS, and the French overseas territories
- **Ports in Cabo Verde, Banjul and many more...**

Implementing the Global Gateway: Port of Cotonou

- Boost the growth of the Port economy
- Addressing environmental challenges
- Ensure port security and safety



Port of Cotonou – EU commits 170M€*



Promoting reforms to sustain investment and public-private partnerships



Developing modern, efficient and safe services



Increasing environmental performance in particular when it comes to energy through infrastructure, institutional and operational support.

*Team Europe - AFD, EIB & EU funding



© Port Autonome de Cotonou

Implementing the Global Gateway: Port of Pointe-Noire

- Extension and upgrading of the infrastructure
- Contain the expansion of industrial fishing
- Bring its facilities into line with international standards



Port of Pointe-Noire – EU commits 100 M€*



Construction of the new industrial fishing port



Structure to protect the traditional fishing fleet's landing area

*Team Europe - EU and AFD funding



© Port of Pointe-Noire



Conclusions



- Global Gateway strategy is the instrument through which the European Union is investing to **strengthen digital, transport and energy networks** responding to EU and partner countries' interests
- There are **many aspects within the maritime sector** where we can positively contribute, from port updates and rehabilitation, to promoting technologies to decarbonise ships (retrofitting), as well as incentivising the production of sustainable renewable fuels and create green shipping corridors
- The Global Gateway contributes to create **strong and sustainable links** between Europe and the world.